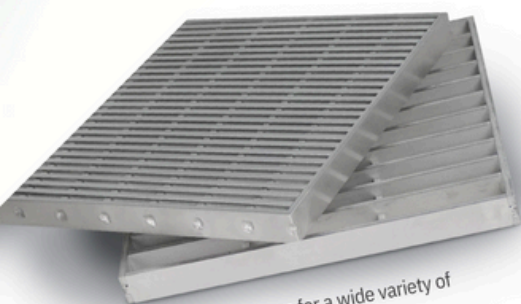


Stainless Steel Floor Sinks



Square grates for a wide variety of applications



Floor Sinks
Square

Versatile & Functional

Stainless steel floor sinks are typically installed in commercial kitchens and food production areas.

Suited for a variety of applications:

From commercial/restaurant, to manufacturing/industrial.

Quality Materials

304 stainless steel material provides durability, easy maintenance, and corrosion resistance.

Perfect where aesthetic appearance is important.

Stainless steel floor sinks are often used as point drains in breweries, dairies, and other high-sanitation applications.

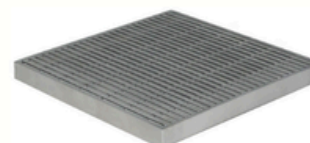


Features

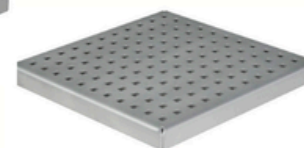
1" recess helps loose-set grates stay in place without fasteners

0.25" wide, rounded top rim blends easily with surrounding finish floor

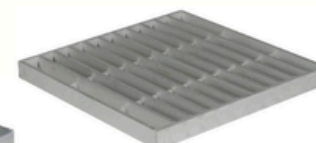
14-gauge, formed and welded stainless steel construction



861-GKQ2FW



861-GKQ2F



861-GKQ2FL



861-BKQ2

Buying Information

ITEM NO.	DESCRIPTION	MIN. QTY.	CASE QTY.
STAINLESS STEEL SQUARE FLOOR SINK			
861-SQ2428	12" x 12" x 8" deep - Stainless steel square floor sink with dome bottom strainer - 4" No-Hub connection	1	1
SQUARE FLOOR SINK GRATES & ACCESSORIES			
861-GKQ2F	Stainless steel grate for 861-SQ2428 - 11ga. square perforated pattern - Full	1	1
861-GKQ2H	Stainless steel grate for 861-SQ2428 - 11ga. square perforated pattern - Open-Half	1	1
861-GKQ2FL	Stainless steel grate for 861-SQ2428 - Heavy-duty, high-inflow ladder pattern - Full	1	1
861-GKQ2FW	Stainless steel grate for 861-SQ2428 - Heavy-duty, heel-resistant wire pattern - Full	1	1
861-BKQ2	Stainless steel debris basket for 861-SQ2428 - fits in bottom of sump area	1	1